



RoHS

ESD
Tested

INSTRUCTION

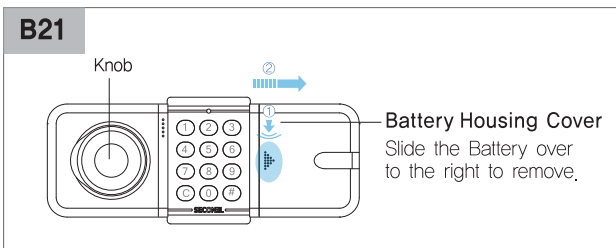
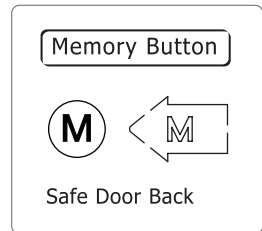
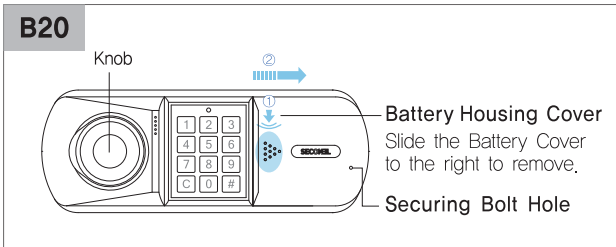


B20

B21

SECONEL

B Series B20, B21



★ How to loaded batteries?

Prior to using safe, install 4pcs of AA batteries.
(LED flickers, Bi Bi Bi sound, Melody rings 1 second)

* Non-alkaline and rechargeable batteries are not recommendable.

Batteries need to be replaced when 'Bi-ric' sound any button pressing.
Replace all the batteries at a time.

* Battery life span : 1 year (Average openings 3 times a day)

* Even if batteries are replaced, the registered code is not erased.

* Note : If the door is not opened in spite of correct user code, please check batteries before calling for service.

1 How to open?

Factory Initial Code is 1 2 3 4.

- 1) Press " C " button
- 2) Press " User Code "
- 3) Press " # " button
- 4) Turn knob clockwise and open the door while melody rings.



* **CAUTION** : If wrong code is tried, it sounds Bi Bi Bi Bi.

* **Paralysis** : If wrong codes are tried over 5 times, the lock gets paralyzed and doesn't work.

① No sound but LED flickers when each button pushed.

② **C # #** (LED flickers with Bi sound)

* **How to release the lock from paralysis ?**

Enter the original code twice consecutively as in the opening procedure.

EX) **C 1 2 3 4 #** → **C 1 2 3 4 #** 

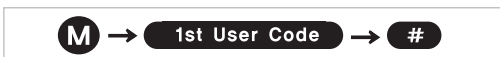
2 How to lock?

Close the door and turn handle counter-clockwise.

* **CAUTION** : Don't close door with active bolts exposed.

3 How to enter 1st user code? : Door open

- 1) Press " M " on the door back.
- 2) Press New Code (Over 4 digits up to 16 digits)
- 3) Press " # " button (Melodic tone)

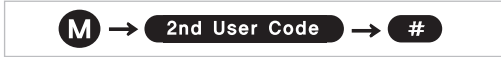


* **CAUTION** : 1) Prior to closing door, reconfirm as shown in [\(1. How to open\)](#) if [\(New code\)](#) registered correctly.

2) Don't enter specific code such as telephone number, birthday, consecutive numbers for security reasons.

4 How to enter 2nd user code?: Door open

- 1) Press " M " on the door back.
- 2) Press " 2 " button.
- 3) Press New Code (Over 4 digits up to 16 digits)
- 4) Press " # " button (Melodic tone)



- * CAUTION : 1) Prior to closing door, reconfirm as shown in [1.How to open](#) if [New code](#) registered correctly.
2) Don't enter specific code such as telephone number, birthday, consecutive numbers for security reasons.

5 How to erase 2nd user code?

- 1) Press " M " on the door back.
- 2) Press " # " button.
- 3) Press " 2 " button.
- 4) Press " # " button (Melodic tone)



6 Scramble Numbers

When opening a safe, scramble numbers can be put [before and/or after the real code](#) to avoid peeps. User code should be touched consecutively.

Ex) In case of user code 1-2-3-4, enter xxx1234, 1234xxx or xxx1234xxx.

SECONEL

19 NoksanSandan 261Ro 60Gil Gangseo-gu Busan, Korea
TEL + 82 51 832 7770 FAX + 82 51 832 7775
Email : info@seconel.co.kr www.seconel.co.kr

To improve products constantly, SECONEL reserves the right to alter the specifications without prior notice.
Printed in Korea, Jan. 17, 2019
